

DOUBLE BASS

ALBENIZ SUITE

I Tango (op 165 no 2)

Albeniz
arr. Webber

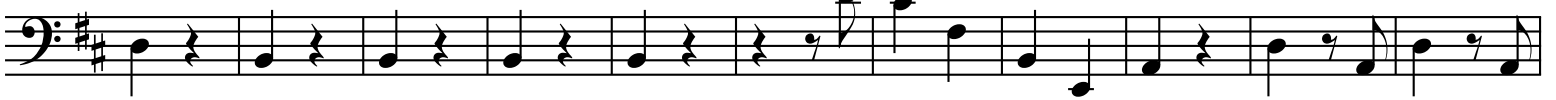
pizz.



10

pizz.

arco



21



32



44



54

pizz.

arco



DOUBLE BASS

II Orientale, Adagio

Allegretto

19 *p*

2 7 3
[5-6] [8-14] [16-18]

19 *pizz.* *arco*

33 *pizz.* *arco* *pizz.* *arco*

4 4 5
[34-37] [42-45] [48-52]

54

4 7
[59-62] [65-71]

73 *arco*

85

4 4
[88-91] [96-99]

100 *pizz.* *arco*

112

2 3
[119-120] [123-125]

126

2 4
[127-128] [130-133]

DOUBLE BASS

III Tango (op 164 no 2)

13

mf [2-4] [6-8]

13

23

33

[33-36] *pp*

46

55

64

74

84

DOUBLE BASS

94

mf [96-98] [100-102]

106

116

126

[127-130] *pp*

139

mf *pp* Adagio *pizz.*

IV Zortzico (op 165 no 6)

mf [1-2] [3-18]

19

mf [19-22] [26-33]

35

f [35-53]